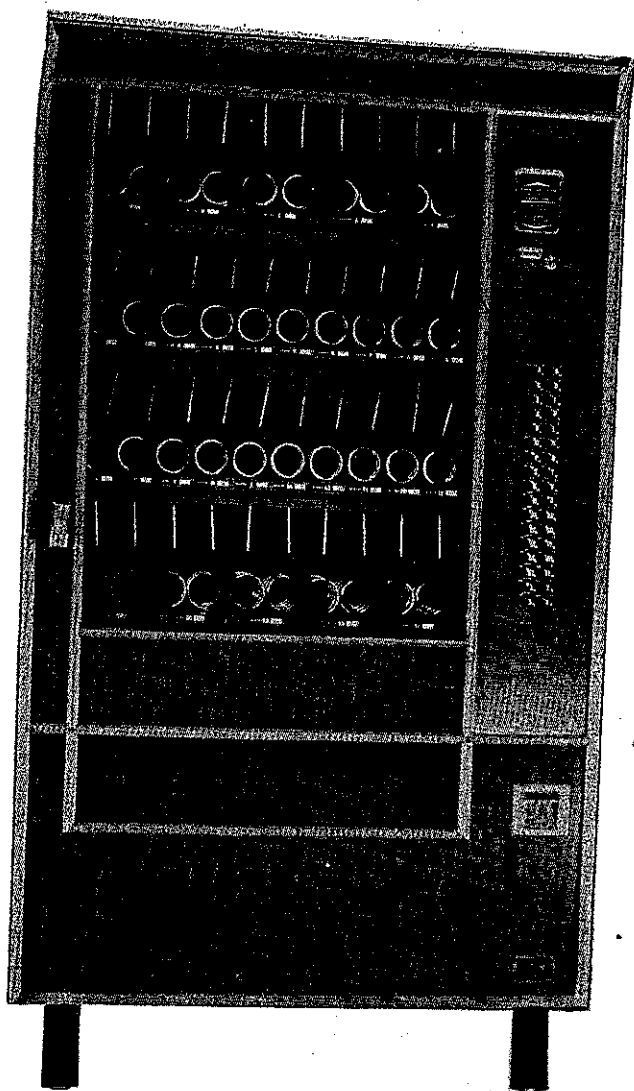


**Lektro
Vend**

**SERVICE
AND PARTS
MANUAL**



**MODELS
210 211
212**

**VENDING
MACHINES**

LEKTRO-VEND CORP.

**911 WEST SULLIVAN ROAD
AURORA, ILLINOIS 60506
PHONE 312/896-8555**

211

210

CHANGERS

MARS 604-24V

COLNCO M-300 24V

Lektro Vend

TABLE OF CONTENTS

Figure	Page
Leveling Machine	2
Door Lock	2
Price Setting	2
Operation Checkout	3
Mint Column Spacers	3
Loading Machine	3
General Maintenance	4
Lubrication	4
Trouble Shooting (Vending Units)	5
Trouble Shooting (Selector)	6
Machine Warranty	6
Ordering Procedure	7
Returning Defective Parts	7
1 Machine Final Assembly Models With Mint	8
2 Machine Final Assembly Models Without Mint	11
3 Tray Assembly Complete--10 Column	14
4 Center Tray Assembly Complete--5 Column	16
5 Top Tray Assembly Complete--5 Column	18
6 Gum And Mint Assembly	20
7 Drive Motor Assembly--Mint	22
8 Pusher And Drive Bar Assembly	23
9 Door Assembly--All Models	24
10 Delivery Tray Assembly	29
11 Selector Assembly--All Models	30
12 Junction Box Assembly	32

Lektro Vend

LEVELING MACHINE

Your machine is equipped with four legs and a leveling screw, one for each of the four legs. These screws are adjusted from outside the machine. Adjust these screws so that the machine is level and does not rock or teeter on any of the four legs.

DOOR LOCK

In most cases the machine is shipped without a door lock. However, it does have a pop-out "T" handle door latching device. This device is held in place with a spring in the hole for the lock. The spring is removed simply by pulling it straight out and the handle will pop out. At this time a lock can be inserted into the handle. With the door open line up the lock latch and 1 of the 4 slots in the handle. Then push the lock all the way in until it latches. Using the lock key, work the lock and "T" handle a few times to be sure all parts are working properly before attempting to lock door. The lock is not supplied with the machine. Any cylinder type lock of your choice may be used.

PRICE SETTING

This machine sells merchandise at ten different prices at one time ranging from 5¢ to \$1.00. The coin mechanism is set at the factory for 10¢, 15¢, 20¢, 25¢, 30¢, 35¢, 40¢, 45¢, 50¢, and 55¢ sales. These ten prices may be changed. However, they must be modified in the changer also. These instructions are found in the Model 370-372 changer manual.

Each column has ten separate price settings. These price settings are found on the back of the door (See Figure 9). To change the price, remove the thumb nut (No. 1 on Figure 9) and pull out top of cover and lift up to remove cover (No. 2 on Figure 9). This will expose the price board located on the back of the selector.

The price board for Model 210 is for 10 prices on each of the 34 selections. To change prices simply slide the desired knob to line up with the proper price #1 to #10. The letters and numbers at the right indicate the selection.

Price #1 to #10 is controlled by the 372 coin changer which may be set at any 10 prices from 5¢ to \$1.00. Therefore, the prices are numbered 1 to 10 with a price setting in changer. A card is placed above the price board so you may keep track of the price setting in the changer.

The coin mechanism is shipped from the factory with price No. 1 corresponding to a 10¢ sale, price No. 2, 15¢, price No. 3, 20¢, price No. 4, 25¢, price No. 5, 30¢, price No. 6, 35¢, price No. 7, 40¢, price No. 8, 45¢, price No. 9, 50¢ and price No. 10, 55¢. Replace cover after changing the prices to prevent unauthorized people from changing the prices.

OPERATION CHECKOUT

In the cash box of each machine there is an envelope containing 6 price sheets, 4 sheets 10¢ to 40¢ and 2 sheets 45¢ to a \$1.00. Place the proper price tag for the selected selling price on the desired column letter plate. (5, Figure 1 and 3, Figure 2). The price tag should be centered in the white rectangle. The price sheets are gummed back and may simply be peeled off and attached to the proper letter plate.

The machine should now be checked to be sure that all columns are set on the desired price.

- (1) Fill nickel payout tube in coin changer with nickels and place about four gum and mint items in each column.
- (2) Insert a quarter into machine and operate each column.
- (3) Check that correct change has been issued, corresponding to established selling price.
- (4) Use same procedure using dimes and nickels, inserting exact selling price for each column. Both checks will verify that each column is set on desired price, and also that coin changer is set on desired prices.
- (5) Run gum and mint section until it is sold out.
- (6) When gum and mint section is empty, column will not run, and when selector push button is pressed, it will not hold in. The other sections do not have these features because empty columns are visible.

MINT COLUMN SPACERS

This gum and mint unit will vend 3" or 4" long items. It is shipped ready to vend the 3" items. To vend 4" long items the mint column spacer must be removed. To remove the mint column spacer (5, Figure 6) remove screw (4, Figure 6) then lift up and pull forward. To replace the mint column spacer (5, Figure 6) hook the top of the spacer over the back of the mint column and replace screw (4, Figure 6). Caution: This spacer must be used when vending 2-1/2" to 3" long items.

LOADING MACHINE

These machines have four gum and mint columns and will vend gum or mint from 2-1/2" to 4" long and up to 15/16" high. The tray merchandise section has 30 columns in the 210, 25 columns in the 211, and 20 columns, no gum and mint in the 212.

Lektro Vend

This machine sells the item displayed. Therefore, this eliminates the need for a display bar. Loading is done from the front to the back. To aid in loading, the four shelf sections can be slid out, by lifting up slightly and pulling out to the first stop and letting the shelf tilt down. On the 10 column shelves there is a guide bar (18, Figure 3) to hold merchandise in upright vending position. Place merchandise in auger with spacing approximately 1/4" more than thickness of merchandise. The bottom of merchandise should rest on shelf ahead of auger as shown. When column is filled, move guide bar to the left to hold the merchandise in an upright position. (On 10 column trays only).

The gum and mint section is located in back of the coin mechanism. To swing out the coin mechanism, release pin (15, Figure 1 and 13, Figure 2) at the upper left hand corner of the coin mechanism. The entire assembly will then swing outward and to the left about 180 degrees. Open gum and mint door and load gum and mint into desired columns. Do not mix gum or mint in the same column. Gum and mint column closest to shelf section of machine is designated No. 1. then progress in order to column No. 4 which is farthest away from the shelf section. After filling gum and mint section, be sure to close gum and mint door, so gum and mint will not be dumped in operation. However, if this detail is overlooked, door will close automatically when the machine door is closed.

The gum and mint display items should now be placed into their proper display location, which is located under the 4 shelf units. The display must correspond to the gum and mint columns, column 1 is selection 1; column 2, selection 2; column 3, selection 3; and column 4, selection 4.

GENERAL MAINTENANCE

FINISH

The finish of your Lektro-Vend machine is a baked-on enamel, which will provide an attractive, long-wearing surface. This finish is similar to automobile finishes, and should be treated in the same manner. Every few months clean and wax the machine to prolong the life of the paint and enhance the appearance. All unpainted parts are anodized aluminum, chrome plated or stainless steel. Clean these parts with a damp cloth.

LUBRICATION

Lubricate all moving parts in the machine every six to twelve months, depending upon the use of the machine. If it becomes necessary to replace any mechanism part in the machine, be sure to lubricate it before installing it. Lubriplate is the recommended lubricant. This lubricant will adhere to parts and does not tend to run. Oil can run and might get into the switches or other electrical parts and cause future problems.

TROUBLE SHOOTING

VENDING UNITS

This vending machine is equipped with a motor to drive each column independently and a separate motor for the gum and mint section. Each of these motors has a switch to control the cycle of the motor. Each motor should make one revolution per vend. Each switch is operated by a cam on the motor. The switch should stop on the high side of the cam. There is a wire in series coming from line 1 to the common of the mint unit cycle switch. This wire then goes in series from the common to the normally open of each column switch and out to the coin mechanism. If any switch is in the normally closed position, that is with the actuator in the detent of the cam, the unit will not operate properly. For instance, when the push button is pushed in, the auger will turn only about 20 to 30 degrees and the button will pop back out. This is because the locking circuit is interrupted by the switch not being in the normally open position. The same problem will occur if there is not good connection in the plugs for each drawer or the plug for the mint unit. To solve this problem it is first necessary to determine which drawer the problem is in. This can be accomplished by unplugging each unit. The plugs for the drawer units are located on the left-hand side of the machine about half way in. The plug for the mint unit is located on the upper right-hand side of the machine. Disconnect drawer number 1 first and jumper contact 1 and contact 3 together on the receptacle mounted in the machine. Then try any drawer not disconnected. If it works properly, you know the problem was in drawer number 1. If it does not work properly and still only moves a small amount, disconnect drawer 2, 3 and 4 in turn and jumper the same contacts. If this does not solve the problem, disconnect the mint unit and jumper contact 1 and 11 together and connect one drawer back up and see if it works properly then. If it works after any one drawer has been jumpered, you will know the problem is in the last drawer that you have paced the jumper on. Remove that drawer and check all switches and wiring going to the drawer.

The wire which we are checking is a continuous circuit thru all cycle switches in every motor in this machine. This is used to tell the coin mechanism when the cycle has finished and this circuit may not be interrupted until the end of cycle. This wire starts from the coin mech terminal number 3, coin mechanism socket A. The wire number is A3C3 and goes from coin mechanism socket A, terminal 3 to the top drawer plug. This is terminal number 3 on socket C. It then enters into the top drawer and in series goes thru all the cycle switches and exits at terminal number 1, socket C, this wire number is C1D3. It then enters into terminal number 3 of socket D of the second drawer. When it exits socket D, it exits on terminal number 1, this wire number is D1E3 and enters into terminal 3 of socket E exits on terminal 1 of socket E, this wire number is E1F3, which enters into terminal 3 of socket F, exits on terminal 1 of socket F which is wire number F1B11. This wire then enters terminal 11 of socket B which is the mint socket and exits on terminal 1 of socket B, this wire is A1B1. Wire A1B1 then enters the coin mechanism again on terminal 1, socket A. Therefore, when the machine is setting at rest and there is no motor operating or at half cycle, there should be continuity

Lektro Vend

from terminal number 1, socket A of the coin mechanism to terminal number 3 of socket A. This could be checked with an ohmmeter or test light. However, the main plug would have to be pulled before checking this wire.

SELECTOR

The selector is a locking type selector, that is when any push-button is pushed in and the proper amount of money is in the machine, the button will lock in during the vend.

All push-buttons have two switches on each button. One for price and one for column selection except the gum and mint. The gum and mint has three switches on each button. The third switch is to run the vend motor. The bottom switch on each button (this is the switch closest to the metal plate) is the price selection switch. The second switch on each column is the column selection switch. On the gum and mint, the third switch, which would be the top switch in this case, is the motor switch. This switch starts the vend motor for the gum and mint. The column selection switch on the gum and mint pulls in the proper electro magnet to select the proper gum and mint column. The reason for the three switches on the gum and mint is that we have one motor running four separate columns.

At the top of the selector there are two solenoids. These solenoids actuate after the push-button has been pushed in and lock it in place. Only one push-button may be pushed in at a time because of anti-cheat washers between each push-button. There is an overload spring on each push-button, so if more than one push-button is forced in at one time, only one button will be actuating the switches. This overload spring is in the unit to prevent damage to any button thru abuse. The two locking solenoids are both connected together. These solenoids operate at exactly the same time. Therefore, if the push-buttons on the left-hand side of the selector lock in properly, but the other side does not, it would indicate that the mechanical connection between this solenoid and the locking bar is disconnected, or the wiring or solenoid is faulty. The same applies to the reverse. Should neither solenoid operate, the problem would probably be in the coin mechanism which has the relays that control the solenoids.

MACHINE WARRANTY

GENERAL WARRANTY

Equipment produced by the Lektro-Vend Corporation is guaranteed to be free from defects in workmanship and material, and will be replaced or repaired without charge when, upon inspection, items are found to be defective. Said warranty to cover one year (12 months) from date of shipment. This warranty does not obligate us where parts or components have been injured by careless handling or improper application. This warranty is valid to the original purchaser only. The term original purchaser as used in this warranty will be

deemed to be that person, firm, association or corporation to whom the machine referred to herein was sold originally.

ORDERING PROCEDURE

When ordering parts, the cabinet serial number and machine model number must accompany the order. This will help insure your obtaining the proper part. When ordering be sure to include the quantity desired, part number, and description of the part being ordered. All parts must be ordered from Lektro-Vend Corp., 911 West Sullivan Road, Aurora, Illinois 60506. All parts will be shipped FOB Aurora, Illinois. Cost of transportation will be offset by credit if the defective part is still under warranty and is returned within 10 days. Any special handling such as air mail shipment, must be paid by purchaser.

RETURNING DEFECTIVE PARTS

Defective parts must be returned to Lektro-Vend Corp., 911 West Sullivan Road, Aurora, Illinois 60506, within 10 days after the receipt of the replacement part. If the part returned is found to be defective due to material or workmanship and is still under warranty, credit will be issued. If the defective part is not returned within 10 days it will automatically be assumed that the item has been purchased by the customer.

DAMAGE IN SHIPMENT

Upon receipt of your equipment, it is your responsibility to note any visible damage to the outside of the crate that might affect the contents. This must be reported to the delivering carrier. Upon removal of the crate, if hidden damage is found, this also must be reported to the delivering carrier. We cannot be held responsible for damages incurred to the equipment while in transit to the delivering carrier. We will assist you in every way possible. To obtain full benefit under the Lektro-Vend Corp. warranty, be sure to furnish the cabinet serial number and model number when returning any parts, ordering parts, or in any other correspondence. When returning defective parts, always return them the most economical way, unless advised otherwise.

INDEX NO.	PART NO.	DESCRIPTION	QTY. PER ASSEM.
1	210-5119	Top And Bottom Tray Assembly Complete--5 Column	2
2	210-5118	Center Tray Assembly Complete--5 Column	0 to 1
3	210-5117	Tray Assembly Complete--10 Column	1 to 2
4	210-8068	Column Letter Plate A to X	1
5	210-8069	Column Letter Plate AA to LL And 1 to 4	1
6	S20C1032-6	Screw And Lockwasher #10-32 x 3/8	9
7	372-5000	Coin Mechanism Assembly	1
8	S20C832-4	Screw And Lockwasher #8-32 x 1/4	2
9	150-5298	Lower Coin Receiver Assembly	1
10	R10K250	Retaining Ring 1/4	2
11	001-6090	Shaft	1
12	210-5070	Coin Return Lever Assembly	1
13	400-7013	Spring	1
14	400-7002	Extension Spring	1
15	400-6020	Lock Pin	1
16	400-8058	Wire Clamp--3/4	1
17	210-6011	Hinge Pin--Coinage Mounting	1
18	210-5041	Coinage Mounting Plate Assembly	1
19	S42C832-4	Screw 8-32 x 1/4	20
20	210-7004	Mint Display Spring	4
21	210-5057	Mint Display Assembly	1
22	210-5183	Right Hand Support Weld Assembly	1
23	210-4200	Left Hand Support	1
24	210-8012	Plastic Canoe Clip .060 Round Head	8
25	210-8021	Plastic Canoe Clip .100 Round Head	16
26	210-4020	Support--Front Track	4
27	210-4032	Track Right Hand	4
28	210-4035	Center Track	4
29	210-4031	Track Left Hand	4
30	N20C832	Nut And Lockwasher #8-32	16
31	210-5072	Door Closer Rod Assembly	1
32	210-8017	Pushnut	2
33	210-6015	Slide--Mint Door Closer	1
34	210-5071	Door Bracket Assembly	1
35	210-7006	Mint Door Closer Rod	1
36	S41C832-5	Screw #8-32 x 5/16	1
37	210-5073	Door Closer Slide Assembly	1
38	210-5060	Gum And Mint Assembly	1
39	N20C2520	Nut And Lockwasher #1/4-20	4
40	S40C818-6	Screw #8-18 x 3/8	4
41	160-4093	Vent Cover	1
42	210-5040	Mint Chute Weld Assembly	1
43	210-7005	Spring Latch--Cash Box	1
44	210-5020	Coin Return Chute Assembly	1
45	210-5080	Cash Box Assembly	1
46	S40C1016-6	Screw #10-16 x 3/8	2

Figure 1 -- MACHINE FINAL ASSEMBLY WITH MINT

Lektro Vend

INDEX NO.	PART NO.	DESCRIPTION	QTY. PER ASSEM.
47	210-5085	Junction Box Assembly Complete	1
48	150-8252	Bottom Hinge Bearing	1 or 2
49	210-8013	Wire Clamp--1"	2
50	400-8056	Wire Clamp--1/2"	1
51	R10K312	Retaining Ring 5/16	1
52	210-5076	Stop Arm Assembly	1
53	210-4076	Lower Mint Chute	1
54	001-8019	Wire Clamp 7/8	2
55	S30C3118-12	Screw And Lockwasher 5/16-18 x 3/4	8
56	001-8007	Leveler	4
57	210-5023	Cabinet Leg Assembly	2
58	S11C832-4	Screw #8-32 x 1/4	6
59	210-5045	Door Assembly Complete	1
60	S20C2520-8	Screw And Lockwasher #1/4-20 x 1/2	2
61	150-5244	Door Support Roller Assembly	1
62	R10K250	Retaining Ring 1/4	2
63	001-6120	Door Support Pin	1
64	150-3020	Door Support Roller	1
65	150-4270	Door Support Roller Bracket	1
66	170-8003	"T" Handle	1
67	S26C1024-8	Round Head Carriage Bolt #10-24 x 1/2	2
68	N20C1024	Nut And Lockwasher #10-24	2
69	N23C5013	Jam Nut #1/2-13	1
70	R12K312	Retainer Ring 5/16	1
71	170-5028	Drive Cam And Lift Lever Assembly	1
72	170-6008	Spacer Bushing	1
73	210-5010	Cabinet Weldment	1
74	W10C312	Washer 5/16	1
75	170-4089	Washer Double "D"	1

Figure 1 -- MACHINE FINAL ASSEMBLY WITH MINT

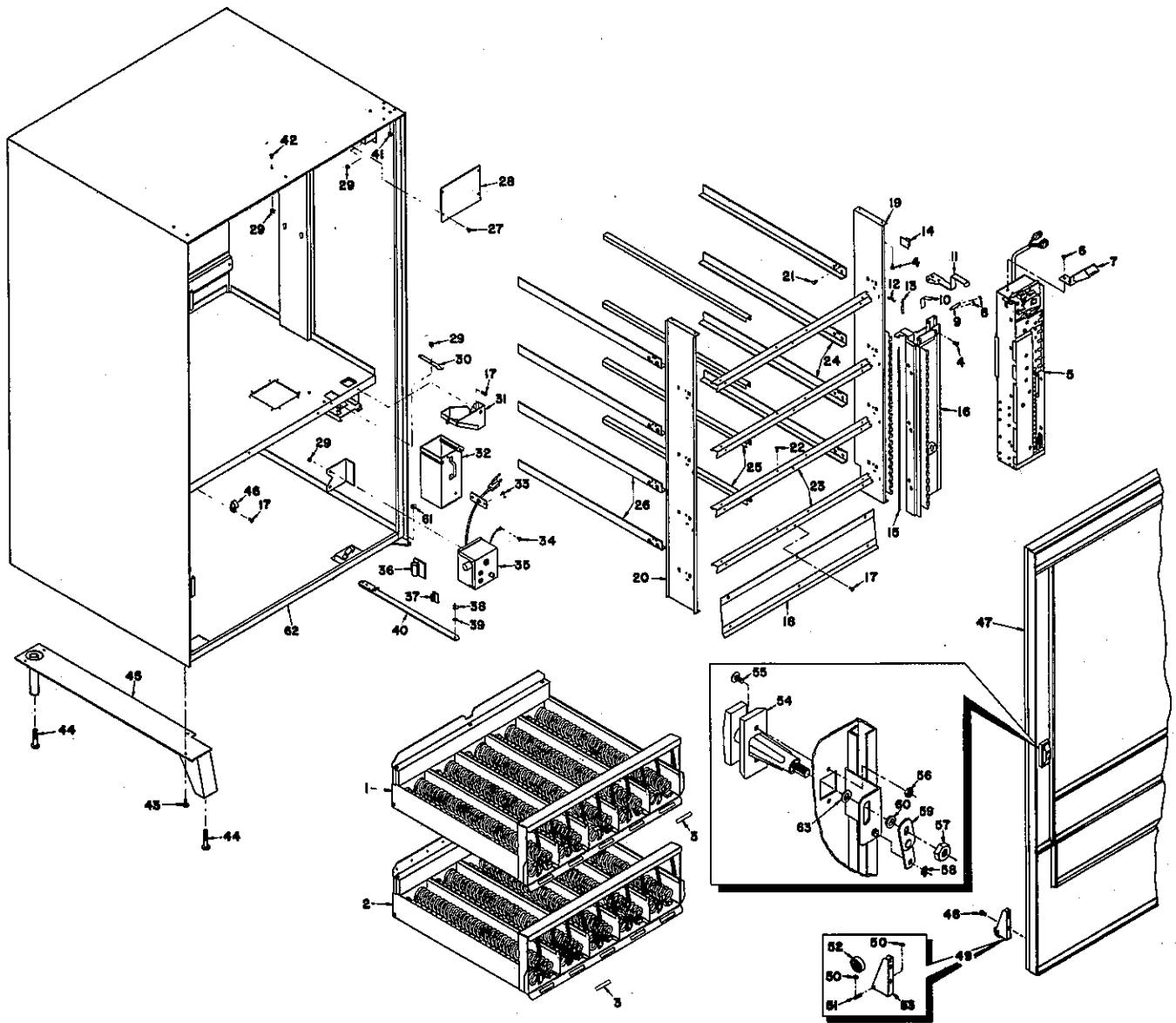


Figure 2 -- MACHINE FINAL ASSEMBLY WITHOUT MINT

Lektro Vend

INDEX NO.	PART NO.	DESCRIPTION	QTY. PER ASSEM.
1	210-5119	Top And Bottom Assembly Complete--5 Column	2
2	210-5118	Center Tray Assembly Complete--5 Column	2
3	210-8068	Column Letter Plate A to X	1
4	S20C1032-6	Screw AND Lockwasher #10-32 x 3/8	9
5	372-5000	Coin Mechanism Assembly	1
6	S20C832-4	Screw and Lockwasher #10-32 x 1/4	2
7	150-5298	Lower Coin Receiver Assembly	1
8	R10K250	Retaining Ring 1/4	2
9	001-6090	Shaft	1
10	400-7013	Spring	1
11	210-5070	Coin Return Lever Assembly	1
12	400-7002	Extension Spring	1
13	400-6020	Lock Pin	1
14	400-8058	Wire Clamp--3/4	1
15	210-6011	Hinge Pin--Coinage Mounting	1
16	210-5041	Coinage Mounting Plate Assembly	1
17	S42C832-4	Screw #8-32 x 5/16	10
18	212-4005	Product Deflector	1
19	210-5183	Right Hand Support Weld Assembly	1
20	210-4200	Left Hand Support	1
21	210-8012	Plastic Canoe Clip .060 Round Head	8
22	210-8021	Plastic Canoe Clip .100 Round Head	16
23	210-4020	Support--Front Track	4
24	210-4032	Track Right Hand	4
25	210-4035	Center Track	4
26	210-4031	Track Left Hand	4
27	S40C818-6	Screw #8-18 x 3/8	4
28	160-4093	Vent Cover	1
29	N20C832	Nut And Lockwasher #8-32	14
30	210-7005	Spring Latch--Cash Box	1
31	210-5020	Coin Return Chute Assembly	1
32	210-5080	Cash Box Assembly	1
33	S40C1016-6	Screw #10-16 x 3/8	2
34	S41C832-5	Screw #8-32 x 5/16	1
35	210-5085	Junction Box Assembly Complete	1
36	210-8013	Wire Clamp--1"	2
37	400-8056	Wire Clamp--1/2"	1
38	R10K312	Retaining Ring 5/16	1
39	W10C312	Washer 5/16	1
40	210-5076	Stop Arm Assembly	1
41	N20C2520	Nut And Lockwasher 1/4-20	4
42	S11C832-4	Screw #8-32 x 1/4	6
43	S30C3118-12	Screw And Lockwasher 5/16-18 x 3/4	8
44	001-8007	Leveler	4
45	210-5023	Cabinet Leg Assembly	2
46	001-8019	Wire Clamp 7/8	2

Figure 2 -- MACHINE FINAL ASSEMBLY WITHOUT MINT

INDEX NO.	PART NO.	DESCRIPTION	QTY. PER ASSEM.
47	210-5045	Door Assembly Complete	1
48	S20C2520-8	Screw And Lockwasher 1/4-20 x 1/2	2
49	150-5244	Door Support Roller Assembly	1
50	R10K250	Retaining Ring 1/4	2
51	001-6120	Door Support Pin	1
52	150-3020	Door Support Roller	1
53	150-4270	Door Support Roller Bracket	1
54	170-8003	"T" Handle	1
55	S26C1032-8	Round Head Carriage Bolt #10-24 x 1/2	2
56	N20C1024	Nut And Lockwasher #10-24	2
57	N23C5013	Jam Nut #1/2-13	1
58	R12K312	Retainer Ring 5/16	1
59	170-5028	Drive Cam And Lift Lever Assembly	1
60	170-6008	Spacer Bushing	1
61	150-8252	Bottom Hinge Bearing	1 or 2
62	210-5010	Cabinet Weldment	1
63	170-4089	Washer--Double "D"	1

Figure 2 -- MACHINE FINAL ASSEMBLY WITHOUT MINT

Lektra Vend

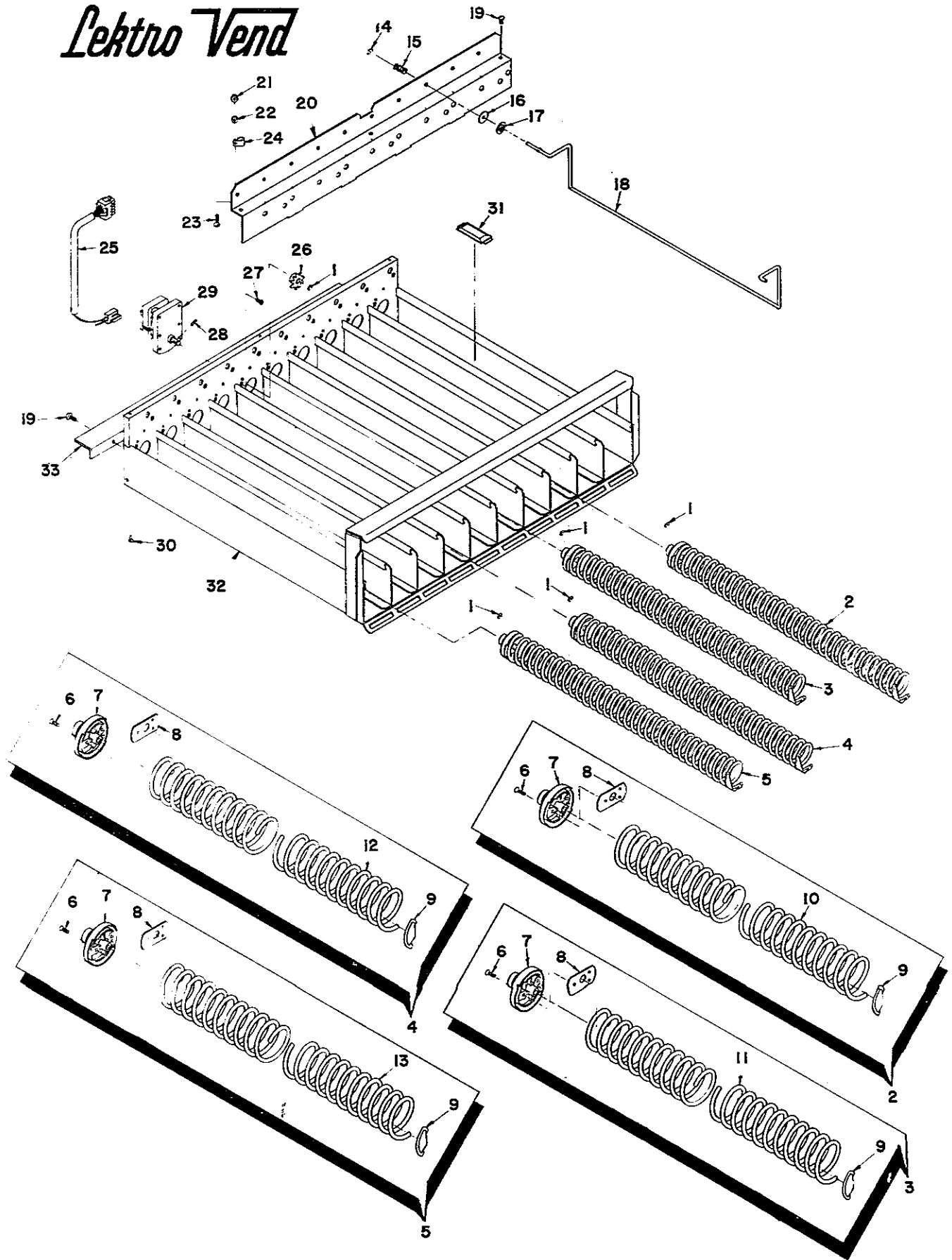


Figure 3 -- TRAY ASSEMBLY COMPLETE -- 10 COLUMN

INDEX NO.	PART NO.	DESCRIPTION	QTY. PER ASSEM.
1	R10K312	Retaining Ring 5/16	20
2	210-5120	Right Hand Spring Auger Assembly--13/16"P	1
3	210-5121	Right Hand Spring Auger Assembly--1"P	5
4	210-5122	Right Hand Spring Auger Assembly--1 3/16"P	3
5	210-5123	Right Hand Spring Auger Assembly--1 1/2"P	1
6	S44C832-8	Screw 8-32 x 1/2	30
7	210-3006	Drive Gear--Helix	10
8	210-4036	Retainer--Helix	10
9	210-3020	Ejector	10
10	210-7013	Right Hand Spring Auger--13/16"P	1
11	210-7010	Right Hand Spring Auger--1"P	5
12	210-7014	Right Hand Spring Auger--1 3/16"P	3
13	210-7015	Right Hand Spring Auger--1 1/2"P	1
14	210-8017	Push Nut	10
15	210-7001	Compression Spring	10
16	210-9005	Friction Washer	10
17	210-4037	Cup Washer	10
18	210-7003	Adjustable Product Retainer	10
19	S42C832-4	Screw 8-32 x 1/4	6
20	210-5175	Cover And Support Bracket--Weldment	1
21	N20C832	Nut And Lockwasher 8-32	1
22	W10C8	Washer #8	1
23	S20C832-8	Screw And Lockwasher 8-32 x 1/2	1
24	001-8017	Wire Clamp 1/2	1
25	210-5133	Tray Wire Harness	1
26	210-3005	Drive Gear	10
27	S41C832-6	Screw 8-32 x 3/8	20
28	P10K094-10	Rollpins 3/32 x 5/8	10
29	210-5130	Drive Motor Assembly	10
30	210-8021	Canoe Clip--.100 Round Head	3
31	210-3010	Wear Pads	20
32	210-5177	Tray Weldment--10 Column	1
33	210-4014	Switch Guard	1

Figure 3 -- TRAY ASSEMBLY COMPLETE -- 10 COLUMN

Lektro Vend

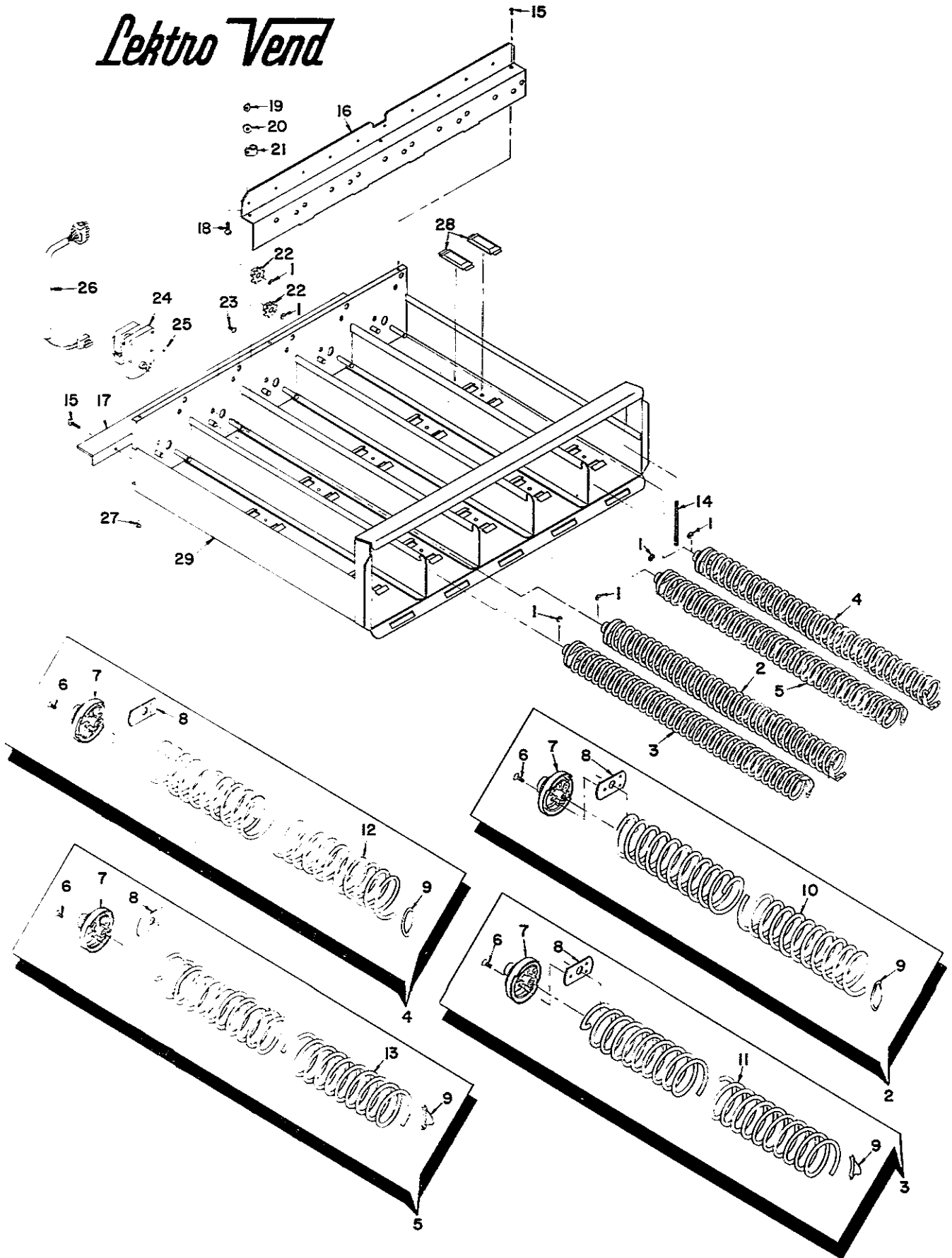


Figure 4 -- CENTER TRAY ASSEMBLY COMPLETE -- 5 COLUMN

INDEX NO.	PART NO.	DESCRIPTION	QTY. PER ASSEM.
1	R10K312	Retaining Ring 5/16	20
2	210-5123	Right Hand Spring Auger Assembly--1 1/2"P	0 to 5
3	210-5124	Left Hand Spring Auger Assembly--1 1/2"P	0 to 5
4	210-5125	Right Hand Spring Auger Assembly--1 3/4"P	0 to 5
5	210-5126	Left Hand Spring Auger Assembly--1 3/4"P	0 to 5
6	S44C832-8	Screw #8-32 x 1/2	30
7	210-3006	Drive Gear--Helix	10
8	210-4036	Retainer--Helix	10
9	210-3020	Ejector	10
10	210-7015	Right Hand Spring Auger 1 1/2"P	0 to 5
11	210-7016	Left Hand Spring Auger 1 1/2"P	0 to 5
12	210-7011	Right Hand Spring Auger 1 3/4"P	0 to 5
13	210-7012	Left Hand Spring Auger 1 3/4"P	0 to 5
14	210-7000	Spring Guide	10
15	S42C832-4	Screw #8-32 x 1/4	6
16	210-5175	Cover And Support Bracket--Weldment	1
17	210-4014	Switch Guard	1
18	S20C832-8	Screw And Lockwasher #8-32 x 1/2	1
19	N20C832	Nut And Lockwasher #8-32	1
20	W10C8	Washer #8	1
21	001-8008	Wire Clamp 3/8	1
22	210-3005	Drive Gear	10
23	S41C832-6	Screw #8-32 x 3/8	10
24	210-5130	Drive Motor Assembly	5
25	P10K094-10	Roll Pin 3/32 x 5/8	5
26	210-5134	Tray Wire Harness--5 Column Bottom	1
27	210-8021	Canoe Clip--.100 Round Head	3
28	210-3010	Wear Pads	20
29	210-5176	Tray Weldment--5 Column	1

Figure 4 -- CENTER TRAY ASSEMBLY COMPLETE -- 5 COLUMN

Lektro Vend

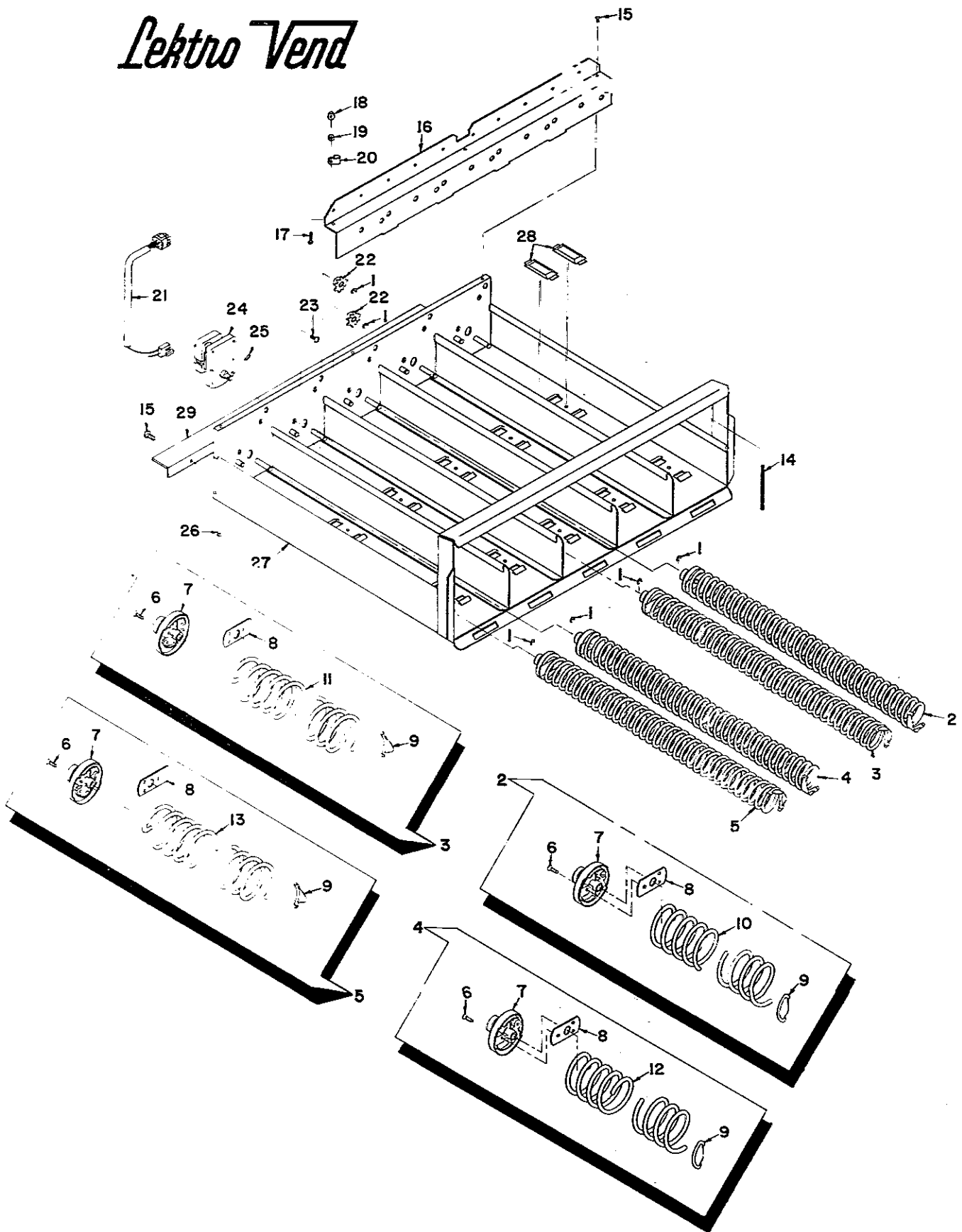


Figure 5 -- TOP TRAY ASSEMBLY COMPLETE -- 5 COLUMN

INDEX NO.	PART NO.	DESCRIPTION	QTY. PER ASSEM.
1	R10K312	Retaining Ring 5/16	20
2	210-5125	Right Hand Spring Auger Assembly--1 3/4"P	0 to 5
3	210-5126	Left Hand Spring Auger Assembly--1 3/4"P	0 to 5
4	210-5127	Right Hand Spring Auger Assembly--2"P	0 to 5
5	210-5128	Left Hand Spring Auger Assembly--2"P	0 to 5
6	S44C832-8	Screw 8-32 x 1/2	30
7	210-3006	Drive Gear--Helix	10
8	210-4036	Retainer--Helix	10
9	210-3020	Ejector	10
10	210-7011	Right Hand Spring Auger--1 3/4"P	1
11	210-7012	Left Hand Spring Auger--1 3/4"P	1
12	210-7117	Right Hand Spring Auger--2"P	1
13	210-7018	Left Hand Spring Auger--2"P	1
14	210-7000	Spring Guide	10
15	S42C832-4	Screw 8-32 x 1/4	6
16	210-5175	Cover And Support Bracket Assembly	1
17	S20C832-8	Screw And Lockwasher #8-32 x 1/2	1
18	N20C832	Nut And Lockwasher #8-32	1
19	W10C8	Washer #8	1
20	001-8008	Wire Clamp 3/8	1
21	210-5135	Tray Wire Harness--Top 5 Column	1
22	210-3005	Drive Gear	10
23	S41C832-6	Screw #8-32 x 3/8	10
24	210-5130	Drive Motor Assembly	5
25	P10K094-10	Rollpins 3/32 x 5/8	5
26	210-8021	Canoe Clip--.100 Round Head	3
27	210-5176	Top Tray Weldment Assembly--5 Column	1
28	210-3010	Wear Pads	20
29	210-4014	Switch Guard	1

Figure 5 -- TOP TRAY ASSEMBLY COMPLETE -- 5 COLUMN

Lektro Vend

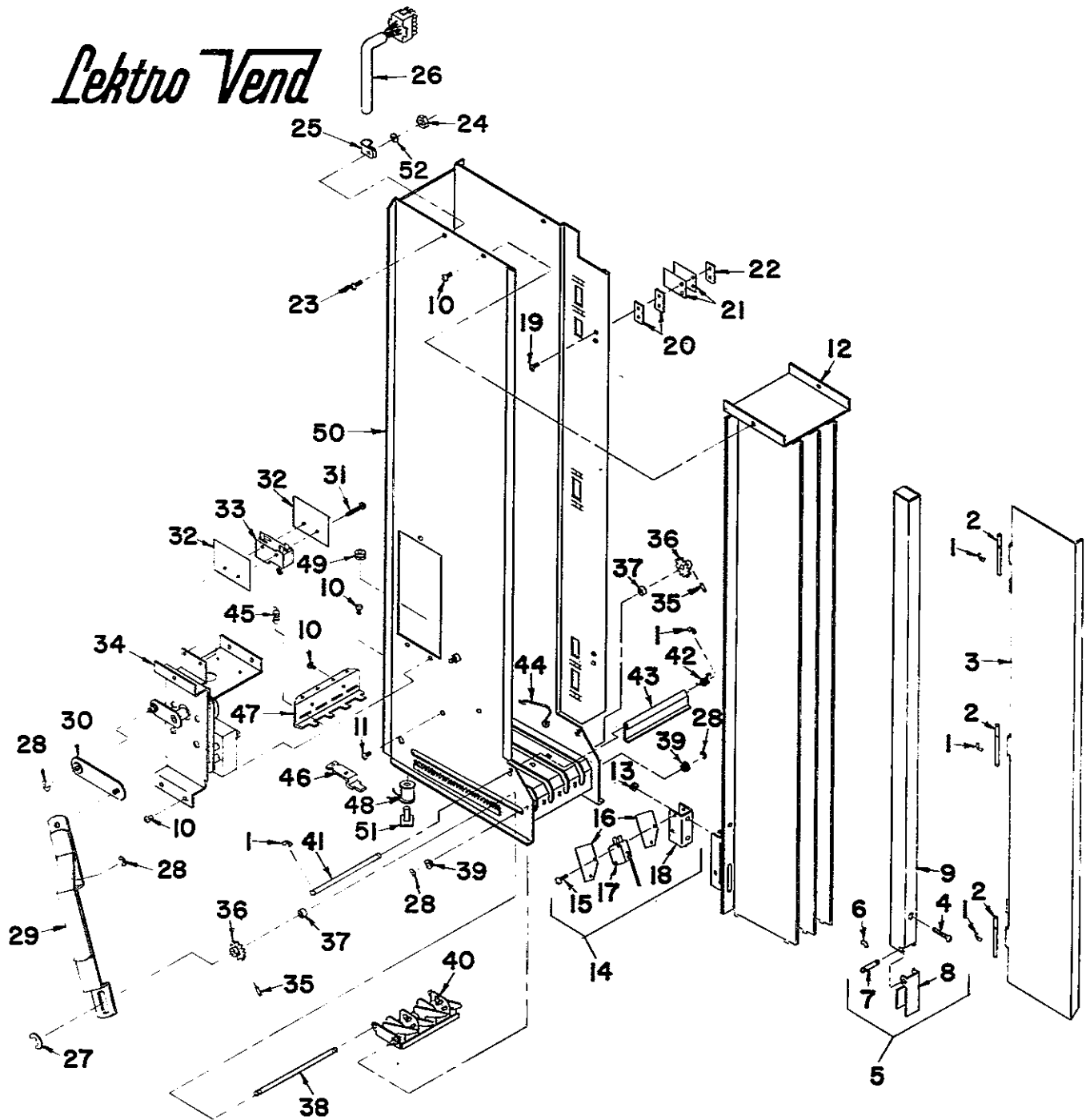


Figure 6 -- GUM AND MINT ASSEMBLY

INDEX NO.	PART NO.	DESCRIPTION	QTY. PER ASSEM.
1	R10K187	Retaining Ring 3/16	5
2	001-6064	Hinge Pin	3
3	210-5067	Mint Door Assembly	1
4	S20C832-16	Screw And Lockwasher 8-32 x 1"	4
5	150-5355	Spacer Assembly	4
6	R10K125	Retaining Ring 1/8	2

INDEX NO.	PART NO.	DESCRIPTION	QTY. PER ASSEM.
7	150-6082	Shaft--Mint Spacer	1
8	150-4362	Spacer Switch Actuator	1
9	150-5354	Spacer Weldment	1
10	S20C832-4	Screw And Lockwasher 8-32 x 1/4	14
11	S20C832-5	Screw And Lockwasher 8-32 x 5/16	2
12	210-5065	Stack Assembly	1
13	N20C632	Nut And Lockwasher 6-32	4
14	102-5145	Bracket And Switch Assembly	2
15	S10C440-9	Screw 4-40 x 9/16	8
16	501-9001	Switch Insulator	8
17	102-8001	Micro Switch	4
18	102-4043	Switch Mounting Bracket	2
19	S12C632-6	Screw 6-32 x 3/8	4
20	001-4125	Door Spring Spacer	4
21	001-7013	Door Spring	4
22	001-4126	Door Spring Nut Bar	2
23	S20C832-8	Screw And Lockwasher 8-32 x 1/2	1
24	N20C832	Nut And Lockwasher 8-32	1
25	001-8017	Wire Clamp (1/2)	1
26	210-5061	Mint Unit Wiring Harness	1
27	R10K375	Retaining Ring 3/8	1
28	R10K250	Retaining Ring 1/4	5
29	150-5349	Drive Arm Assembly	1
30	210-5066	Drive Link Assembly	1
31	S20C632-16	Screw And Lockwasher 6-32 x 1"	2
32	001-9012	Insulator	2
33	001-8013	Micro Switch	1
34	210-5068	Drive Motor Assembly	1
35	P10K094-6	Roll Pin 3/32 x 3/8	2
36	150-5422	Hub And Gear Assembly	2
37	150-6007	Spacer Roller	2
38	150-6013	Shaft Mint	1
39	001-6052	Shoulder Roller	2
40	150-5358	Pusher And Drive Bar Assembly	1
41	150-6009	Shaft	1
42	210-7002	Torsion Spring	1
43	210-4093	Feeler Gate	1
44	001-7012	Guide Spring	3
45	001-7018	Extension Spring--Mint	4
46	150-5359	Armature Riveting Assembly	4
47	001-4127	Armature Retainer	1
48	170-8001	Electro Magnet--Mint	4
49	001-8020	Rubber Grommet 3/8	2
50	210-5062	Side Plates And Chassis Assembly	1
51	170-5033	Core And Shading Ring Assembly	4
52	W10C8	Washer #8	1

Figure 6 -- GUM AND MINT ASSEMBLY

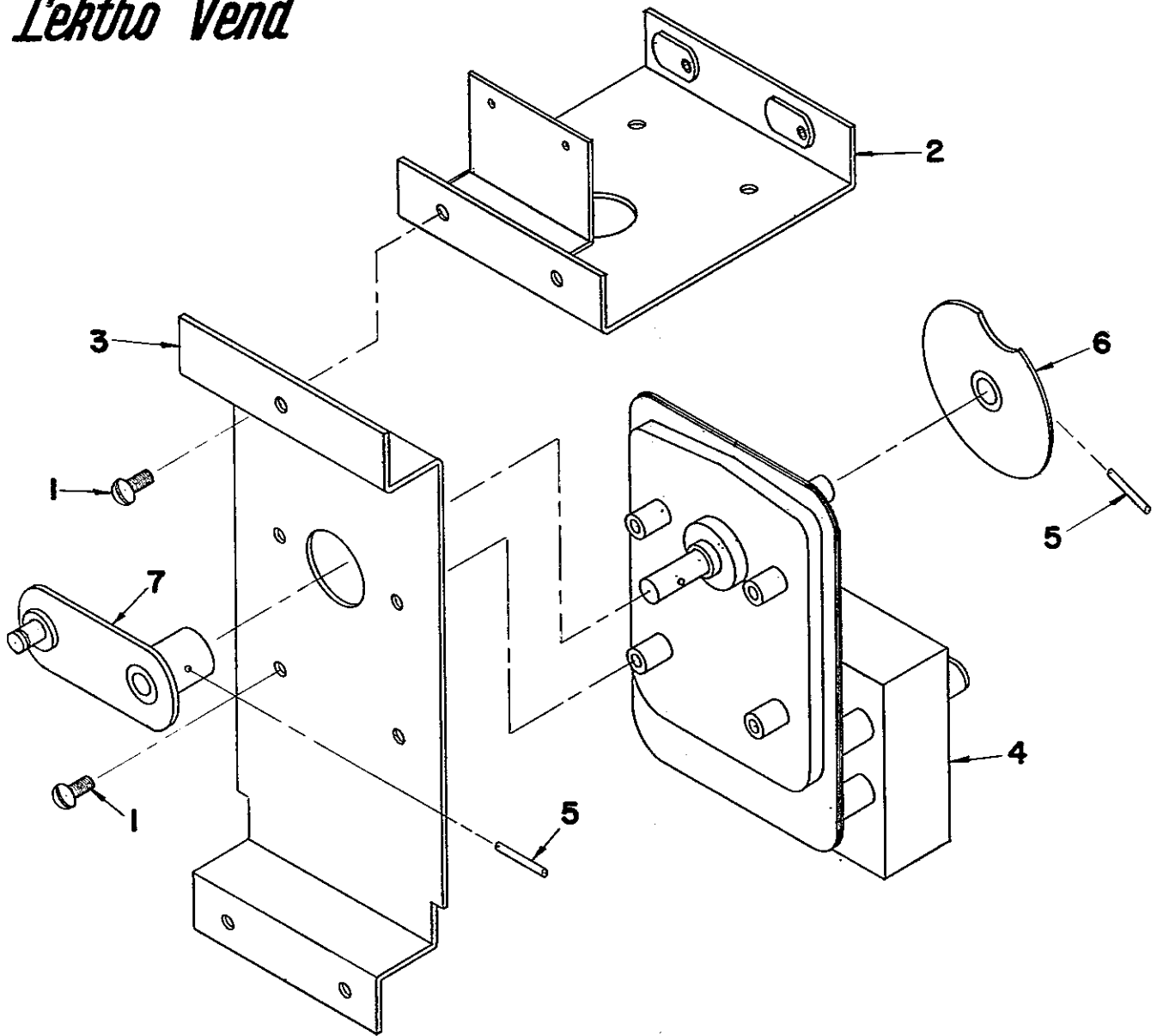


Figure 7 -- DRIVE MOTOR ASSEMBLY -- MINT

INDEX NO.	PART NO.	DESCRIPTION	QTY. PER ASSEM.
1	S20C832-5	Screw And Lockwasher 8-32 x 5/16	6
2	150-5352	Motor Switch Bracket Assembly	1
3	150-4349	Motor Mounting Bracket	1
4	112-8020	Drive Motor--Mint	1
5	P10K094-10	Roll Pin 3/32 x 5/8	2
6	150-5420	Interlock Cam Assembly	1
7	150-5351	Drive Cam Assembly	1

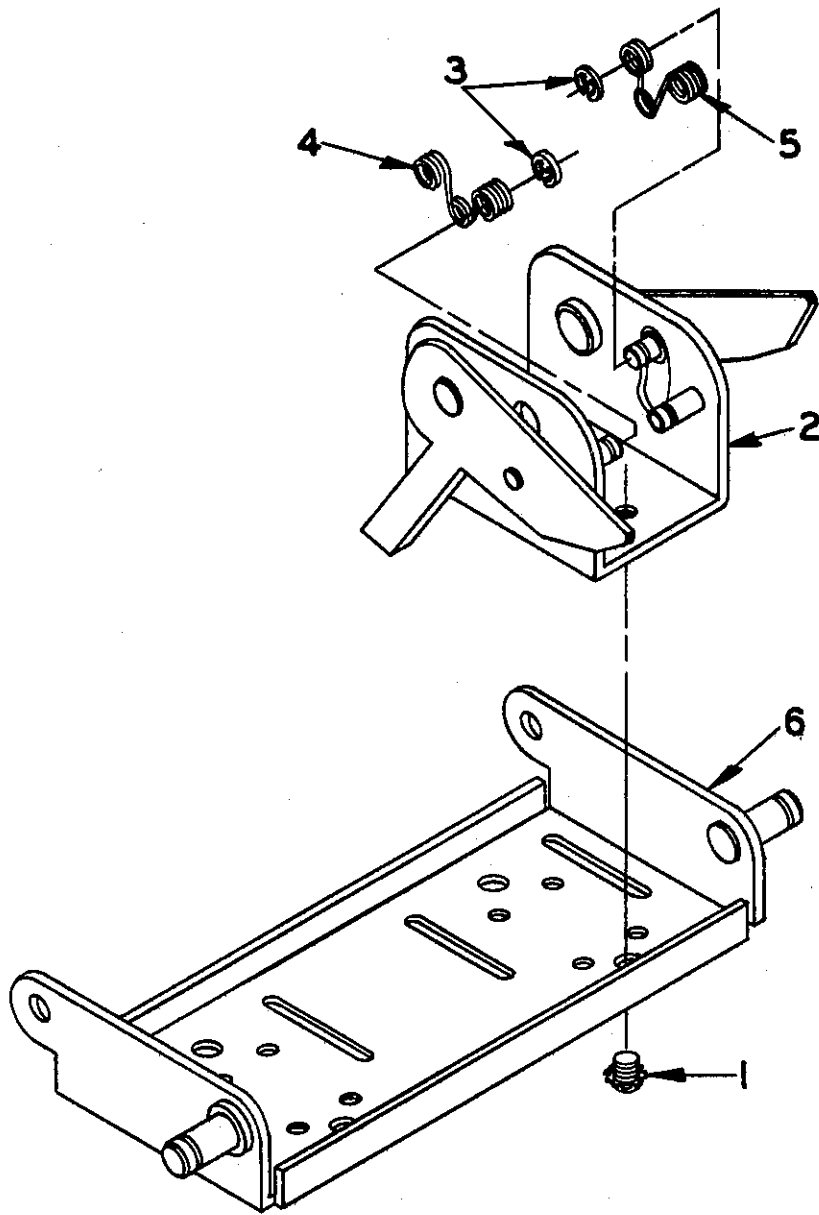


Figure 8 -- PUSHER AND DRIVE BAR ASSEMBLY

INDEX NO.	PART NO.	DESCRIPTION	QTY. PER ASSEM.
1	S20C1032-3	Screw And Lockwasher 10-32 x 3/16	4
2	001-5422	Pusher Support Assembly	2
3	R10K156	Retaining Ring 5/32	8
4	001-7024	Pusher Spring--Left Hand	2
5	001-7023	Pusher Spring--Right Hand	2
6	150-5357	Pusher Drive Bar Assembly	1

Lektro Vend

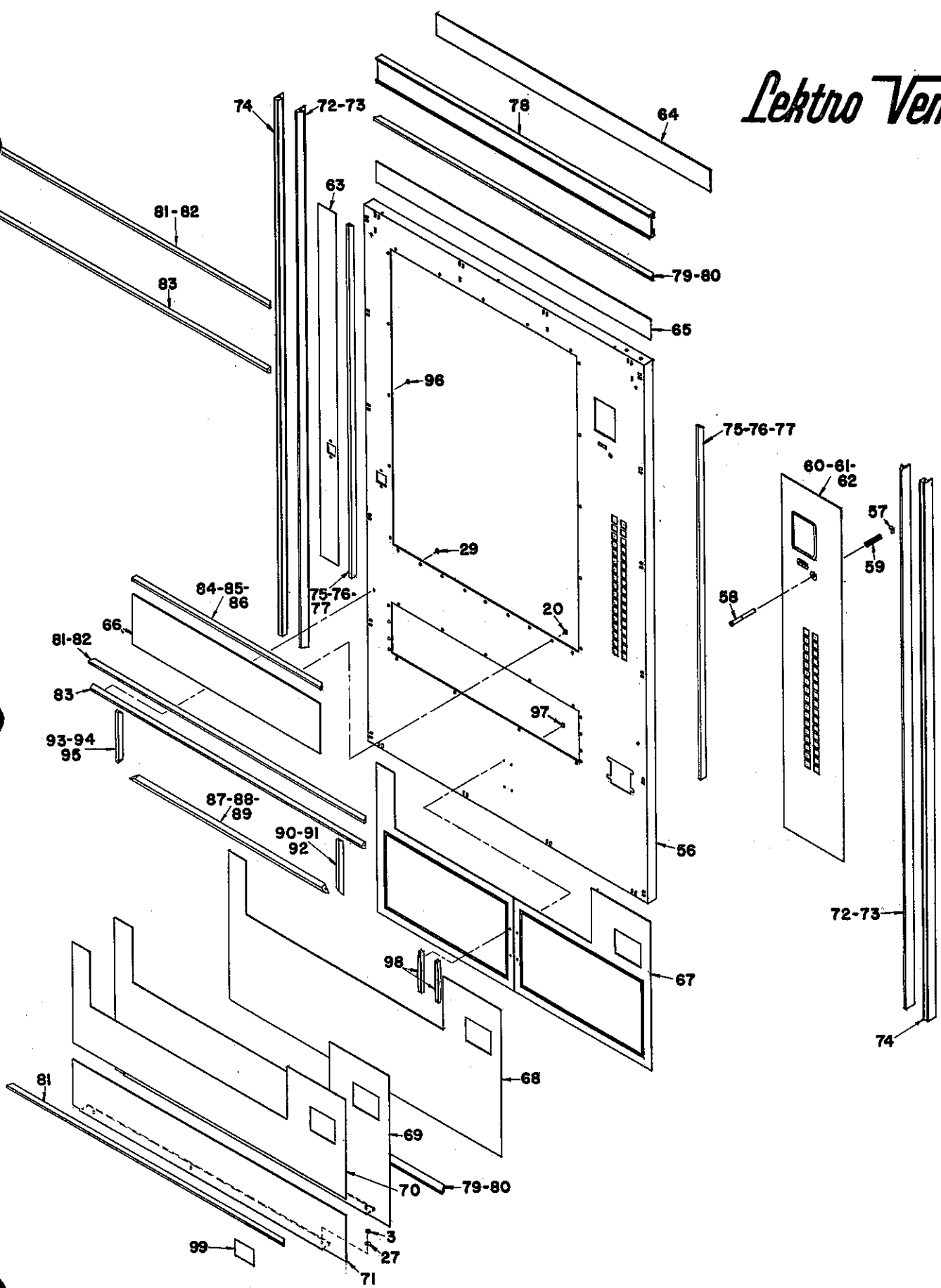


Figure 9 -- DOOR ASSEMBLY -- ALL MODELS

Lektro Vend

INDEX NO.	PART NO.	DESCRIPTION	QTY. PER ASSEM.
1	400-8029	Knurled Thumb Nut	1
2	210-4065	Cover--Price Exchange	1
3	N20C832	Nut And Lockwasher #8-32	27 to 30
4	210-4098	Anti Cheat Guard--Delivery Tray	2
5	210-5056	Selector Cover	1
6	S40C620-3	Screw #6-20 x 3/16	0 to 4
7	211-4000	Plate--Selector Cover--Model 211 And 212	0 to 1
8	W10C8	Flat Washer #8	3
9	210-5180	Selector Assembly--Model 210	0 to 1
10	211-5011	Selector Assembly--Model 211	0 to 1
11	212-5011	Selector Assembly--Model 212	0 to 1
12	400-8013	Fluorescent Lamp--22 Watt	1
13	S10C440-8	Screw #4-40 x 1/2	4
14	210-5048	Display Light Harness	1
15	S42C832-4	Screw #8-32 x 1/4	4
16	210-5059	Top Support Assembly--Product Guide	1
17	S11C832-4	Screw #8-32 x 1/4	10
18	210-4062	Left Hand Product Guide	1
19	210-4063	Right Hand Product Guide	1
20	S39C818-10	Screw #8-18 x 5/8	24
21	210-4051	Glass Retainer--Right And Left Hand	2
22	210-4052	Glass Retainer--Top And Bottom	2
23	210-9007	Display Glass Gasket--Vertical	2
24	210-9008	Display Glass Gasket--Horizontal	2
25	210-9006	Door Display Glass	1
26	R10K187	Retaining Ring 3/16	2
27	W10C10	Flat Washer #10	2 to 5
28	170-5029	Lock Bar Assembly	1
29	S39C818-6	Screw 8-18 x 3/8	21
30	210-5058	Delivery Tray Assembly	1
31	S40C818-6	Screw #8-18 x 3/8	4
32	210-4044	Support Delivery Tray	1
33	210-4097	Anti-Cheat Angle--Delivery Door	1
34	N20C2520	Nut And Lockwasher #1/4-20	4
35	150-5313	Bottom Door Hinge Assembly	1
36	150-5316	Top Hinge Assembly	1
37	S20C1032-8	Screw And Lockwasher #10-32 x 1/2	4
38	210-5022	Coin Chute Weld Assembly	1
39	R10K125	Retaining Ring 1/8	2
40	001-6122	Pin--Coin Return Cup	1
41	001-2004	Coin Return Door	1
42	001-5132	Coin Return Cup Assembly	1
43	001-2003	Coin Return Front	1
44	400-5230	Coin Chute And Return Arm Assembly	1
45	R10K250	Retaining Ring 1/4	2
46	150-6070	Coin Return Roller	1

Figure 9 -- DOOR ASSEMBLY -- ALL MODELS

INDEX NO.	PART NO.	DESCRIPTION	QTY. PER ASSEM.
47	150-7009	Coin Return Arm Spring	1
48	150-5227	Coin Return Arm Assembly	1
49	400-5229	Coin Chute And Bracket Assembly	1
50	001-8019	Wire Clamp 7/8	1
51	160-5089	Indicator Light Assembly	1
52	210-9010	Instruction Glass	1
53	160-8011	Out Glass Gasket	2
54	160-4015	Out Light Glass Cover	1
55	400-8056	Wire Clamp 1/2	2
56	210-5046	Door Weldment	1
57	R10K312	Retaining Ring 5/16	1
58	150-5228	Coin Return Pin Assembly	1
59	001-7019	Coin Return Spring	1
60	210-4124	Coin Entrance Plate--Model 210	0 to 1
61	211-4024	Coin Entrance Plate--Model 211	0 to 1
62	212-4024	Coin Entrance Plate--Model 212	0 to 1
63	210-4128	Door Panel--Left Hand	1
64	160-4280	Door Panel Top--Rowe Award	0 to 1
65	210-4120	Door Top Panel	0 to 1
66	210-4121	Door Panel Lower	1
67	210-4125	Door Bottom Panel--National G.F.	0 to 1
68	210-4123	Door Panel--Bottom Long	0 to 1
69	210-5049	Door Bottom Panel Assembly--Rowe Award	0 to 1
70	210-4126	Door Lower Panel--Vendo	0 to 1
71	160-5103	Door Bottom Panel Assembly--Vendo	0 to 1
72	150-2022	Door Frame Sides	0 to 2
73	170-2012	Door Frame Sides--National G.F.	0 to 2
74	160-2041	Door Frame Sides--Rowe Award	0 to 2
75	210-2004	Door Extrusion Right And Left Hand Vertical	0 to 2
76	210-2011	Door Extrusion Right & Left Hand Vertical--Nat'l G.F.	0 to 2
77	170-2026	Door Extrusion Right & Left Hand Vertical--Rowe Award	0 to 2
78	160-2040	Door Frame Top--Rowe Award	0 to 1
79	150-2021	Door Frame Ends	0 to 2
80	170-2011	Door Frame Ends--National G.F.	0 to 2
81	170-2002	Door Extrusion Top And Bottom Horizontal	0 to 3
82	170-2015	Door Extrusion Top & Bottom Horizontal--Nat'l G.F.	0 to 2
83	170-2024	Door Extrusion Top & Bottom Horizontal--Rowe Award	0 to 2
84	210-2006	Door Extrusion--Center Horizontal	0 to 1
85	210-2013	Door Extrusion--Center Horizontal--National G.F.	0 to 1
86	210-2021	Door Extrusion--Center Horizontal--Rowe Award	0 to 1
87	210-2005	Delivery Tray Extrusion Bottom	0 to 1
88	210-2012	Delivery Tray Extrusion Bottom--National G.F.	0 to 1
89	210-2020	Delivery Tray Extrusion Bottom--Rowe Award	0 to 1
90	210-2007	Delivery Tray Extrusion--Right Hand	0 to 1
91	210-2014	Delivery Tray Extrusion--Right Hand--National G.F.	0 to 1
92	210-2022	Delivery Tray Extrusion--Right Hand--Rowe Award	0 to 1

Figure 9 -- DOOR ASSEMBLY -- ALL MODELS

Lektro Vend

INDEX NO.	PART NO.	DESCRIPTION	QTY. PER ASSEM.
93	210-2008	Delivery Tray Extrusion--Left Hand	0 to 1
94	210-2015	Delivery Tray Extrusion--Left Hand--National G.F.	0 to 1
95	210-2023	Delivery Tray Extrusion--Left Hand--Rowe Award	0 to 1
96	S40C620-6	Screw #6-20 x 3/8	16 to 24
97	S40C620-3	Screw #6-20- x 3/16	0 to 4
98	160-3034	Handle--National G.F.	0 to 2
99	001-8102	Name Plate	1
100	212-5020	No Mint Cover--Delivery Tray	0 to 1

Figure 9 -- DOOR ASSEMBLY -- ALL MODELS

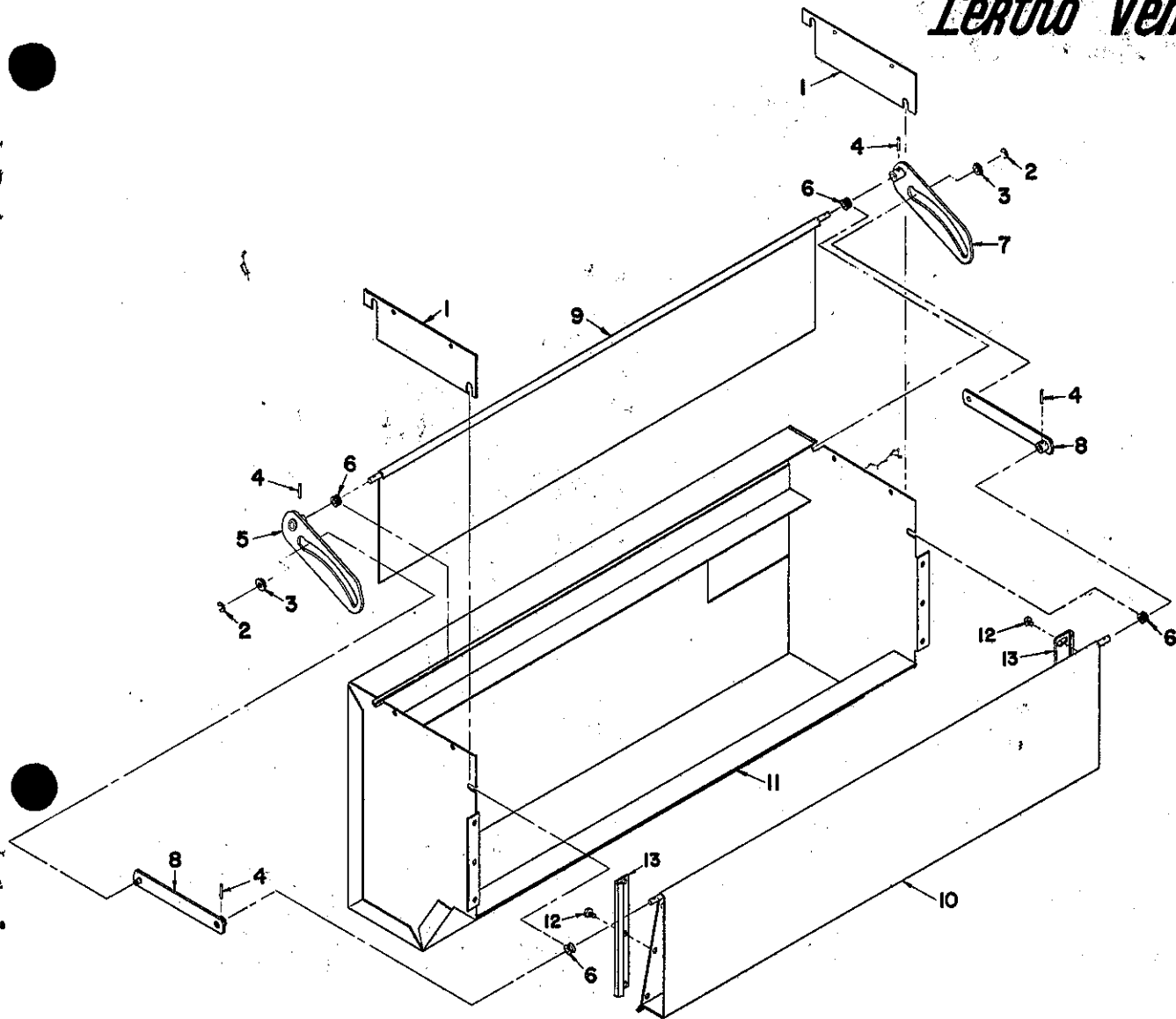


Figure 10 -- DELIVERY TRAY ASSEMBLY

INDEX NO.	PART NO.	DESCRIPTION	QTY. PER ASSEM.
1	210-4069	Retainer Anti-Cheat	2
2	R10K250	"E" Ring 1/4	2
3	210-6006	Roller--Delivery Door	2
4	P10K094-10	Rollpin .094 x 5/8	4
5	210-5084	Lift Arm Assembly Left Hand--Anti-Cheat	1
6	210-6003	Spacer--Delivery Door	4
7	210-5083	Lift Arm Assembly Right Hand--Anti-Cheat	1
8	210-5082	Drive Arm Assembly--Anti-Cheat	2
9	210-5052	Anti-Cheat Door And Shaft Assembly	1
10	210-5069	Delivery Door Weld Assembly	1
11	210-5047	Delivery Tray Weld Assembly	1
12	S39C818-6	Screw #8-18 x 3/8	6
13	210-4099	Anti-Cheat Plate--Delivery Door	2

Lektro Vend

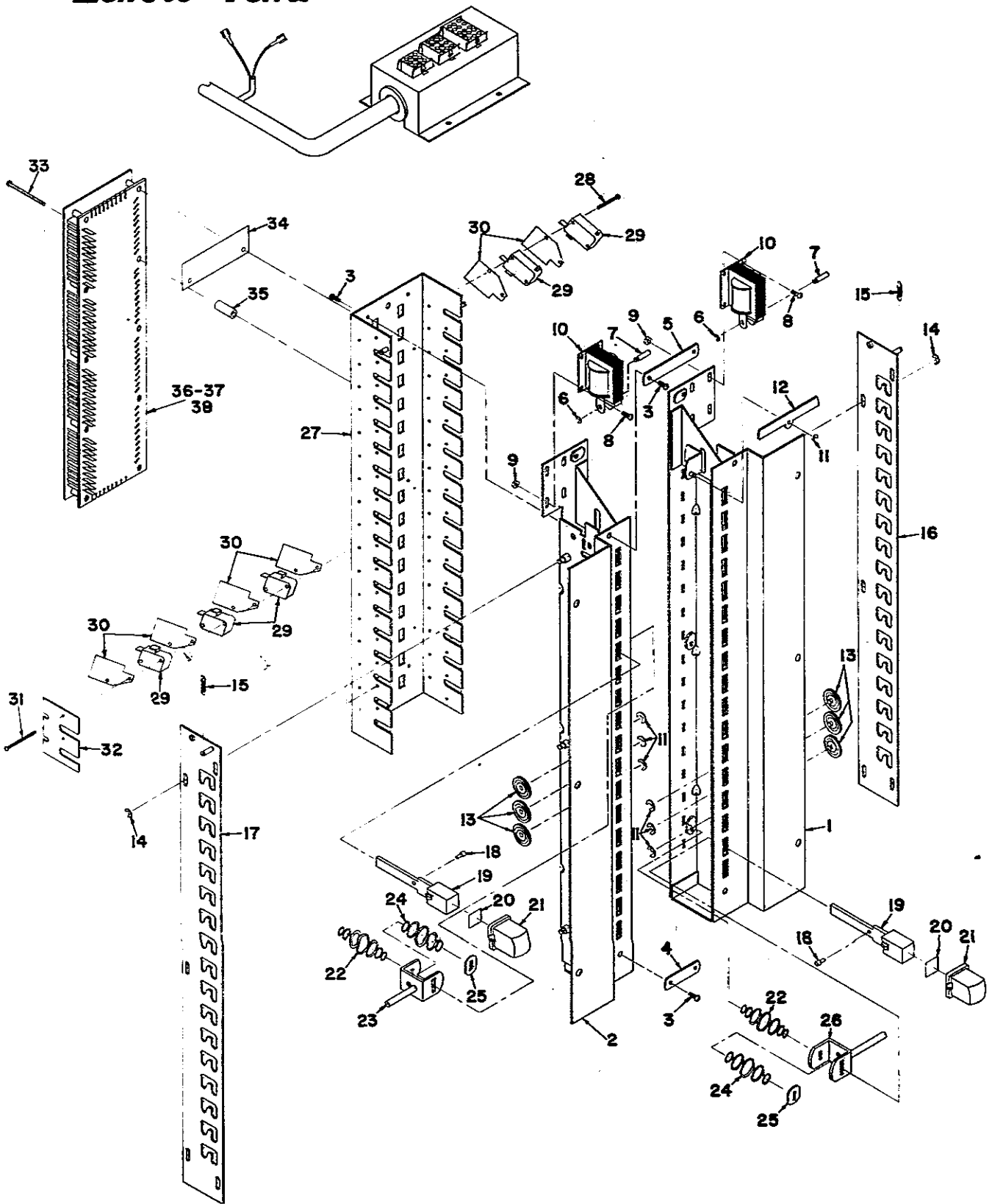


Figure 11 -- SELECTOR ASSEMBLY -- ALL MODELS

INDEX NO.	PART NO.	DESCRIPTION	QTY. PER. ASSEMBLY MODEL NO.		
			210	211	212
1	210-5091	Selector Frame & Support Bracket Assembly--R.Hand	1	1	1
2	210-5092	Selector Frame & Support Bracket Assembly--L.Hand	1	1	1
3	S20C832-5	Screw And Lockwasher #8-32 x 5/16	12	12	12
4	210-4150	Short Tie Bar	2	2	2
5	210-4149	Long Tie Bar	1	1	1
6	R10K125	Retaining Ring 1/8	2	2	2
7	501-6006	Solenoid Pin	2	2	2
8	S20C632-5	Screw And Lockwasher #6-32 x 5/16	8	8	8
9	N20C632	Nut And Lockwasher #6-32	8	8	8
10	501-8000	Selector Solenoid	2	2	2
11	R10K187	Retaining Ring 3/16	35	35	21
12	210-4152	Rocker Bar	1	1	1
13	501-5007	Anti-Cheat Washer Assembly	34	34	20
14	R10K156	Retaining Ring 5/32	10	10	10
15	501-7002	Extension Spring	2	2	2
16	210-5099	Lock Bar Assembly--Right Hand	1	1	1
17	210-5100	Lock Bar Assembly--Left Hand	1	1	1
18	501-6009	Push Pin Retaining Pin	34	29	20
19	210-5103	Push Button Assembly	34	29	20
20	210-8036	Push Button Letters	1	1	1
21	210-3016	Cover--Push Button	34	29	20
22	170-7000	Push Pin Return Spring	34	29	20
23	170-5065	Drive Link Assembly	30	25	20
24	170-7001	Push Pin Override Spring	34	29	20
25	501-4012	Push Pin Washer	34	29	20
26	210-5102	Drive Link Assembly	4	4	0
27	210-5101	Switch Bracket Assembly	1	1	1
28	S10C440-15	Screw #4-40 x 15/16	60	50	40
29	501-8001	V3 Micro Switch	72	62	40
30	400-9005	Switch Insulator	76	66	40
31	S10C440-23	Screw #4-40 x 1 7/16	8	8	0
32	210-4145	Switch Guide Plate	2	2	0
33	S10C832-28	Screw #8-32 x 1 3/4	6	4	4
34	210-9009	Price Board Insulation	1	1	1
35	210-6012	Post--Matrix Switch Mounting	6	4	4
36	210-8018	Matrix Selector Switch--34 Selections	1	0	0
37	211-8018	Matrix Selector Switch--29 Selections	0	1	0
38	212-8018	Matrix Selector Switch--20 Selections	0	0	1

Figure 11 -- SELECTOR ASSEMBLY -- ALL MODELS

Lektro Vend

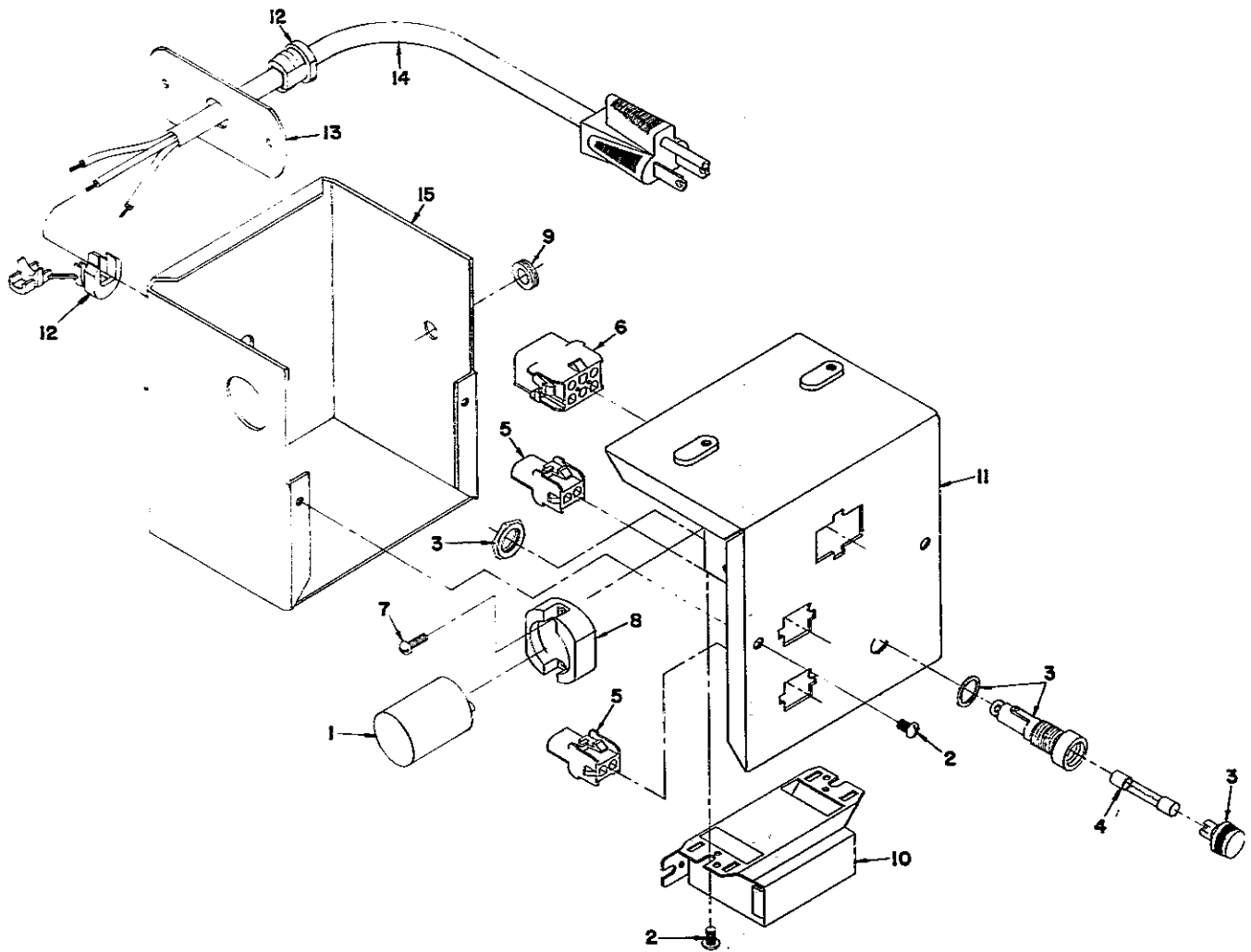


Figure 12 -- JUNCTION BOX ASSEMBLY

INDEX NO.	PART NO.	DESCRIPTION	QTY. PER ASSEM.
1	001-8101	Starter FS25	1
2	S20C832-4	Screw And Lockwasher 8-32 x 1/4	4
3	001-8071	Fuseholder	1
4	001-8072	Fuse--5 Amp	1
5	210-8003	Cap Housing (2-Circuit)	2
6	210-8005	Cap Housing (6-Circuit)	1
7	S10C440-6	Screw 4-40-3/8	2
8	001-8028	Starter Socket	1
9	001-8020	Rubber Grommet 3/8	1
10	400-8046	Ballast--22 Watt	1
11	210-5086	Junction Box Cover Weldment	1
12	001-8081	Strain Relief	2
13	160-4099	Power Cord Plate	1
14	001-8080	Power Cord	1
15	160-5161	Junction Box Weldment	1